

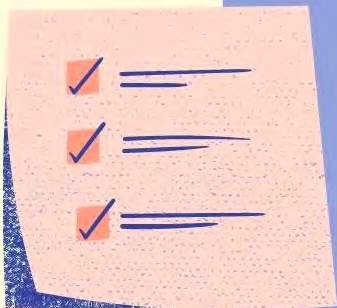
*Distance  
Learning  
Solutions*

INCARE TECHNOLOGIES



**InCare**<sup>K12</sup>

TOMORROW'S CLASSROOM TODAY



# Plug & Play usb camera

**plug into any laptop, panel, device for  
incredible video and audio!**



- ✓ **PORTABLE!** Size of a Rubiks cube and plugs into any device with usb port
- ✓ **use with any meeting platform-Zoom,Google Meets, Teams, etc.**
- ✓ **teacher tracking-** camera follows the teacher for authentic classroom experience

**\$679**

# Poly Studio Bar - use Plug & Play

With acoustic fencing, noise blocking, presenter mode, and conversation mode, this is the **ULTIMATE**, easy, solution to teaching virtually. The teacher plugs the bar into their laptop and presenter mode follows them around their classroom. From the white board, to the math focus wall, and over to her desk, the camera is their with seamless transitions to make the student feel **IN** the classroom.

Say goodbye to being stuck behind the laptop, teach as you would from your interactive panel, small group table, or science lab, and let the Studio Bar do the work. The bar contains the camera, the speakers, and the mic, **ALL IN ONE**, with **TWO CORDS**. One USB, One power cord and you're good to go!



**\$799**



# SLEEK. COMPACT. ALL IN ONE DESIGN

## Studio X30

Pair the Studio x30 with a single panel. This option is great to use while participating in class sessions live, record lessons, or use as a "virtual student" with the optional table stand for a more mobile solution.

The x30 has acoustic fencing and teacher tracking providing distraction free learning and an authentic classroom experience for those not onsite!

Use in "device mode" with existing meeting platform for ease of transition from meeting on a small device to meeting on an interactive panel!

### \$1,712

\*If used with existing panel. Training and installation available



- ★ includes panel clamp
- ★ table stand option for "virtual student" to watch the teacher with
- ★ high quality video and audio
- ★ device mode
- ★ acoustic fencing and teacher tracking



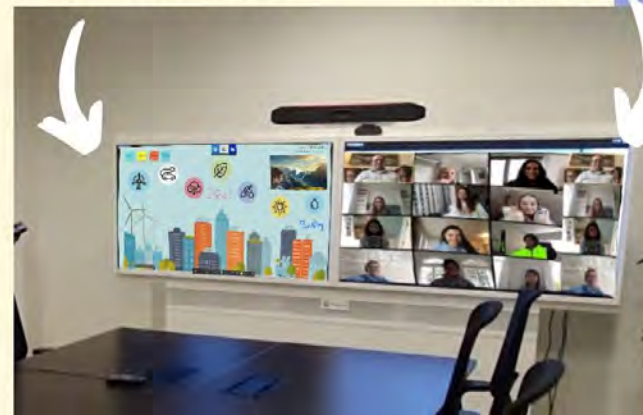
# Studio X50

Pair the Studio x50 with dual panels! This option is great to use while participating in distance learning, dual enrollment, career tech, and more!

Teach or share content interactively from one screen, and display students that are not on-site on an additional large display.

INTERACTIVE LESSON

PARTICIPANTS



## Dual Panels

Easily view content and far end participants at the same time

**\$2,640**

\*If used with existing tablet and panel(s)  
Training and installation available

## All in One

One sleek bar that includes speakers, camera, and codec with acoustic fencing and teacher tracking



## Authentic Experience

Authentic classroom experience. Observable interactive lessons for far end AND on site students. Teacher feels that